

PC CABINETS (IP54)



Material :

Body : 1,50 mm SHEET STEEL
 Front Door : 1,50 mm SHEET STEEL
 Side Lids : 1,20 mm SHEET STEEL
 Rear Door : 1,50 mm SHEET STEEL

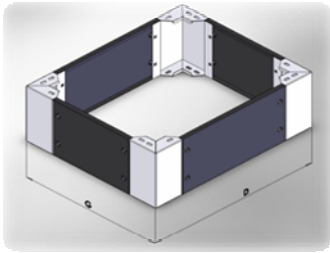
Surface Finishing : SHEET STEEL parts;
 Iron phosphated and powder coated in
 textured RAL 7035

Protection Category : IP54(EN 60 529)
 Polyurethan Sealing Gasket

Supply Includes :

Body, Side lids, Gland plate, Keyboard Holder
 ,Front-rear door, 100 mm plinth, 1 pcs
 immovable shelf, Monitor shelf.

Width (G)	Height (Y)	Depth (D)	Colour	Ref.No
600	1600	600	ORANGE	406.166-1
			TURQUOISE	406.166-2
			BLUE	406.166-3
600	1800	800	GREY	406.166-4
			ORANGE	406.168-1
			TURQUOISE	406.168-2
600	1800	600	BLUE	406.168-3
			GREY	406.168-4
			ORANGE	406.186-1
600	1800	800	TURQUOISE	406.186-2
			BLUE	406.186-3
			GREY	406.186-4
600	1800	800	ORANGE	406.188-1
			TURQUOISE	406.188-2
			BLUE	406.188-3
600	1800	800	GREY	406.188-4



Material :
 Plinth corner : 2.00 mm GALVANIZED STEEL
 Plinth Lids : 1,50 mm GALVANIZED STEEL
Surface Finishing : Iron phosphated and powder coated in textured (Corners ; RAL 7035 , Lids ; RAL 9005)
Supply Includes : Plinth lids, Plinth corners and connection components

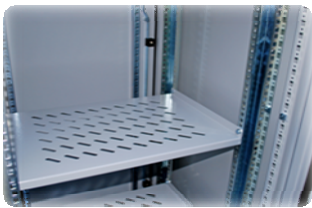
200 mm HEIGHT PC CABINET PLINTH

Width (G)	Depth (D)	Ref.No
600	600	912.266
	800	912.268

Material : PC cabinet printer shelf : 1,50 mm SHEET STEEL
Surface Finishing : Iron phosphated and powder coated in textured RAL 7035
Supply Includes : PC cabinet printer shelf and connection components

PC CABINET PRINTER SHELF

Width (G)	Depth (D)	Ref.No
600	600	941.106
	800	941.108



Material: PC cabinet immovable shelf : 1,50 mm SHEET STEEL
Surface Finishing : Iron phosphated and powder coated in textured RAL 7035
Supply Includes : PC cabinet immovable shelf and connection components

PC CABINET IMMOVABLE SHELF

Width (G)	Depth (D)	Ref.No
600	600	941.266
	800	941.268



Material : PC cabinet movable shelf : 1,50 mm SHEET STEEL
Surface Finishing : Iron phosphated and powder coated in textured RAL 7035
Supply Includes : PC cabinet movable shelf , Rail and connection components

PC CABINET MOVABLE SHELF

Width (G)	Depth (D)	Ref.No
600	600	941.306
	800	941.308



Material: 2,00mm GALVANIZED STEEL
Supply Includes: Mounting plate and connection components

PC CABINET MOUNTING PLATE

Width (G)	Depth (D)	Ref.No
600	600	942.306
	800	942.308

* Mounting plate is 585 mm in height