

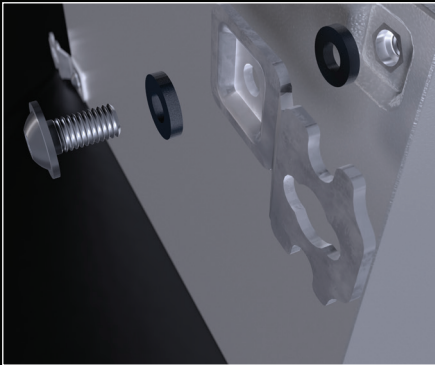


<b>Malzeme</b>	: Gövde, Ön Kapı, Alt Kapak DKP Sac, 4 mm Şeffaf Temperli Cam
<b>Yüzey İşlem</b>	: Demir-fosfat + elektrostatik toz boya RAL 7035
<b>IP Sınıfı</b>	: IEC EN 60529 IP 66
<b>NEMA Sınıfı</b>	: Nema 4

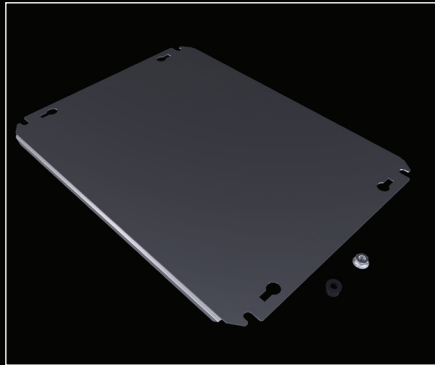
<b>Standartlar</b>	: IEC 62208 (Pano Standartları)
<b>Korozyon Sınıfı</b>	: TS EN ISO 12944-2' ye göre C3-M
<b>Garanti</b>	: KYT-72
<b>Ürün İçeriği</b>	: Gövde, Camlı Mentşeli Kapı, Alt Kapak, Bağlantı Parçaları

## AKSESUARLAR:

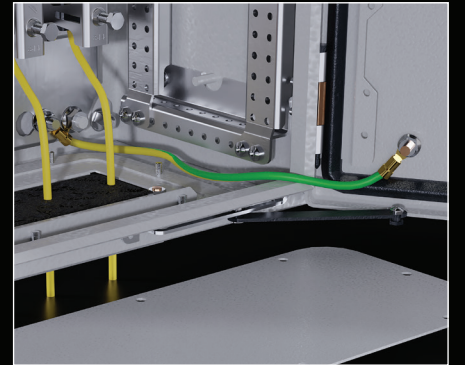
Duvar Tutucusu sf: 55



Montaj Plakası sf.: 60



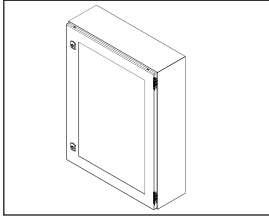
Topraklama Kablosu sf: 71



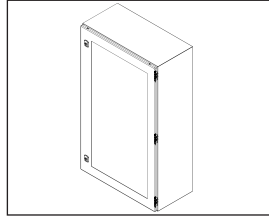
Diğer Aksesuarlar sf: 50

## DM-MEDIUM CAMLI KAPILI PANO

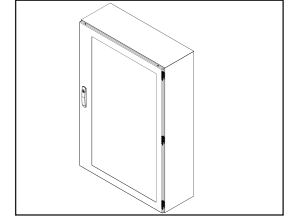
ÜRÜN KODU	PANO				MONTAJ PLAKASI		SAC KALINLIKLARI		KAPAK		VERSİYON
	W*	H*	D*	AĞIRLIK	W	H	GÖVDE	KAPI	KİLİT	MENTEŞE	
	mm	mm	mm	kg	mm	mm	mm	mm	adet	adet	
DM 274.521	400	500	210	9,54	350	475	1,2	1,2	2	2	1
DM 274.530	400	500	300	12,87	350	475	1,2	1,2	2	2	1
DM 274.621	400	600	210	10,73	350	575	1,2	1,2	2	2	1
DM 274.630	400	600	300	14,23	350	575	1,2	1,2	2	2	1
DM 275.621	500	600	210	13,04	450	575	1,2	1,5	2	2	1
DM 275.630	500	600	300	16,70	450	575	1,2	1,5	2	2	1
DM 275.721	500	700	210	14,53	450	675	1,2	1,5	2	2	1
DM 275.726	500	700	260	16,59	450	675	1,2	1,5	2	2	1
DM 276.621	600	600	210	14,74	550	575	1,2	1,5	2	2	1
DM 276.630	600	600	300	18,58	550	575	1,2	1,5	2	2	1
DM 276.821	600	800	210	23,08	550	775	1,5	2	2	2	1
DM 276.830	600	800	300	28,29	550	775	1,5	2	2	2	1
DM 276.126	600	1000	260	30,50	550	975	1,5	2	2	3	2
DM 276.130	600	1000	300	33,10	550	975	1,5	2	2	3	2
DM 276.123	600	1200	300	37,90	550	1175	1,5	2	1	3	3
DM 278.130	800	1000	300	40,10	750	975	1,5	2	2	3	2
DM 278.123	800	1200	300	46,00	750	1175	1,5	2	1	3	3



Versiyon 1



Versiyon 2



Versiyon 3

Katalog



Montaj talimatı