



KT TERMINAL BOX



**Materials** : Main Body, Door Mild Steel  
**Surface Finishing** : Nano Plating + Electrostatic Powder Coating RAL 7035  
**IP Rate** : IEC EN 60529 IP 66  
**NEMA Rate** : NEMA 4  
**IK Rate** : IK 06

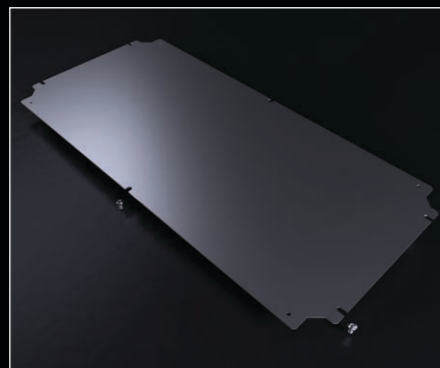
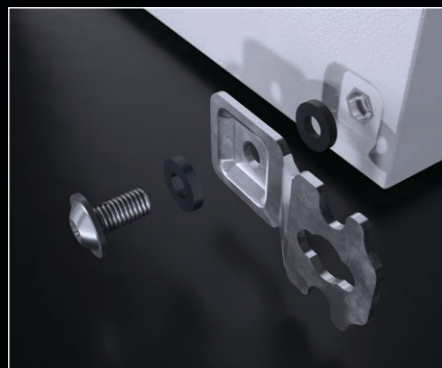
**Standards** : IEC 62208 (Enclosure Standards)  
**Corrosion Rate** : C3-M based on TS EN ISO 12944-2  
**Warranty** : KYT-72  
**Supply Includes** : Body, Locked Cover, Assembly Parts  
 Please see page 381 for technical drawings.

ACCESSORIES:

Wall Bracket p.: 55

Mounting Plate p.: 60

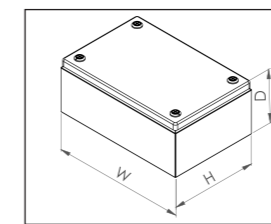
Earthing Cable p.: 71



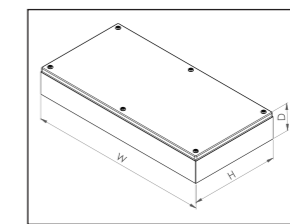
Other Accessories p.: 50

KT TERMINAL BOX

PRODUCT CODE	ENCLOSURE				STEEL THICKNESSES		COVER		
	W*	H*	D*	WEIGHT	BODY	COVER	LOCK	HINGE	VERSION
	mm	mm	mm	kg	mm	mm	pcs.	pcs.	
KT 351.180	150	150	80	1,15	1,2	1,2	4	N/A	1
KT 352.180	200	150	80	1,38	1,2	1,2	4	N/A	1
KT 352.280	200	200	80	1,65	1,2	1,2	4	N/A	1
KT 353.180	300	150	80	1,83	1,2	1,2	4	N/A	1
KT 353.280	300	200	80	2,19	1,2	1,2	4	N/A	1
KT 354.280	400	200	80	2,74	1,2	1,2	4	N/A	1
KT 351.112	150	150	120	1,67	1,2	1,2	4	N/A	1
KT 352.112	200	150	120	1,94	1,2	1,2	4	N/A	1
KT 352.212	200	200	120	2,24	1,2	1,2	4	N/A	1
KT 353.112	300	150	120	2,46	1,2	1,2	4	N/A	1
KT 353.212	300	200	120	2,86	1,2	1,2	4	N/A	1
KT 353.312	300	300	120	3,67	1,2	1,2	4	N/A	1
KT 354.112	400	150	120	2,98	1,2	1,2	4	N/A	1
KT 354.212	400	200	120	3,48	1,2	1,2	4	N/A	1
KT 354.312	400	300	120	4,48	1,2	1,2	4	N/A	1
KT 354.412	400	400	120	5,47	1,2	1,2	4	N/A	1
KT 355.212	500	200	120	4,10	1,2	1,2	4	N/A	1
KT 355.312	500	300	120	5,28	1,2	1,2	4	N/A	1
KT 356.212	600	200	120	4,72	1,2	1,2	4	N/A	1
KT 356.312	600	300	120	6,09	1,2	1,2	6	N/A	2
KT 356.412	600	400	120	7,46	1,2	1,2	6	N/A	2
KT 358.212	800	200	120	5,96	1,2	1,2	6	N/A	2
KT 358.412	800	400	120	9,45	1,2	1,2	6	N/A	2



Version 1



Version 2

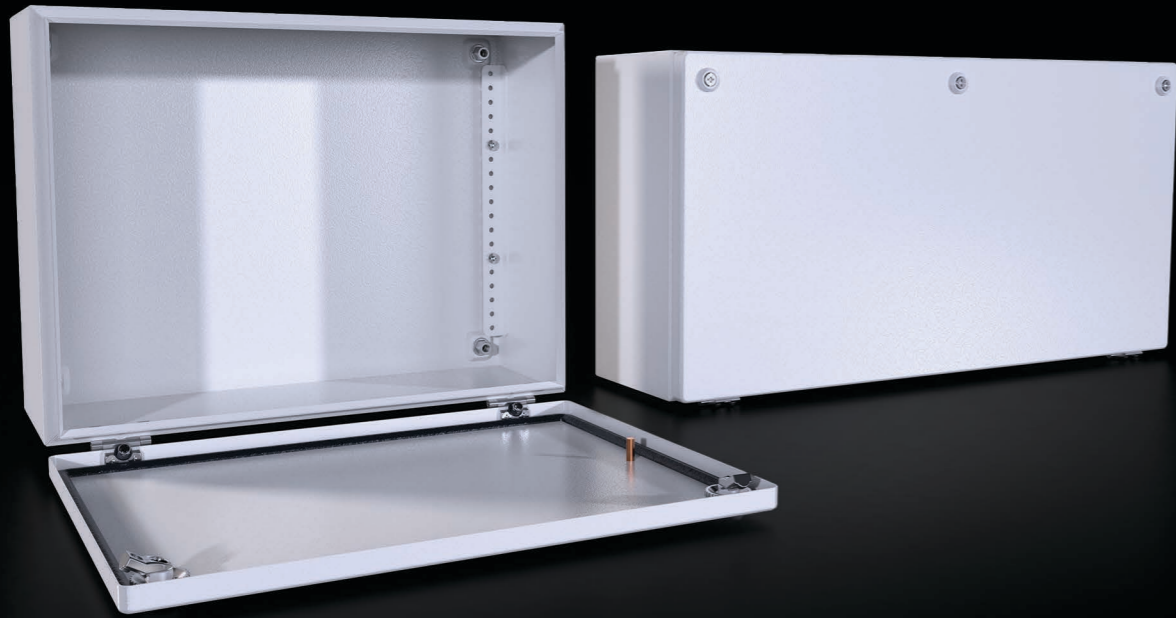


Catalogue



Assembly Instructions

KT SOLID DOOR BUS BOX



**Materials** : Main Body, Door Mild Steel  
**Surface Finishing** : Nano Plating + Electrostatic Powder Coating RAL 7035  
**IP Rate** : IEC EN 60529 IP 66  
**NEMA Rate** : NEMA 4  
**IK Rate** : IK 06

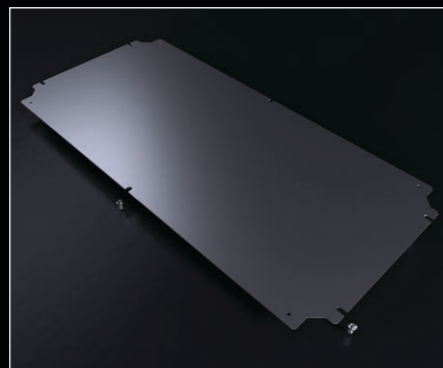
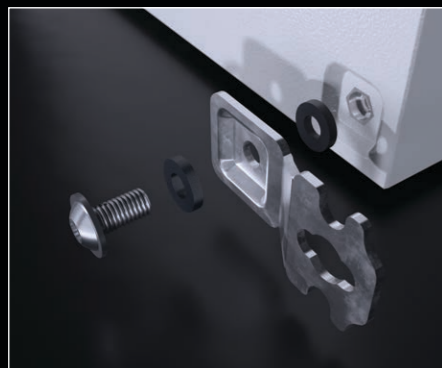
**Standards** : IEC 62208 (Enclosure Standards)  
**Corrosion Rate** : C3-M based on TS EN ISO 12944-2  
**Warranty** : KYT-72  
**Supply Includes** : Body, Hinged Door, Assembly Parts  
 Please see page 382 for technical drawings.

ACCESSORIES:

Wall Bracket p.: 55

Mounting Plate p.: 60

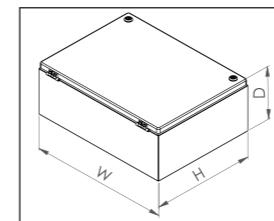
Earthing Cable p.: 71



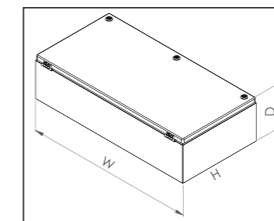
Other Accessories p.: 50

KT SOLID DOOR BUS BOX

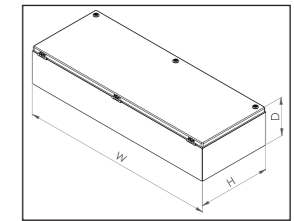
PRODUCT CODE	ENCLOSURE				STEEL THICKNESSES		COVER		
	W*	H*	D*	WEIGHT	BODY	COVER	LOCK	HINGE	VERSION
	mm	mm	mm	kg	mm	mm	pcs.	pcs.	
KT 364.215	400	200	155	4,23	1,2	1,2	2	2	1
KT 364.315	400	300	155	5,29	1,2	1,2	2	2	1
KT 366.315	600	300	155	7,04	1,2	1,2	3	2	2
KT 368.315	800	300	155	8,78	1,2	1,2	3	3	3



Version 1



Version 2



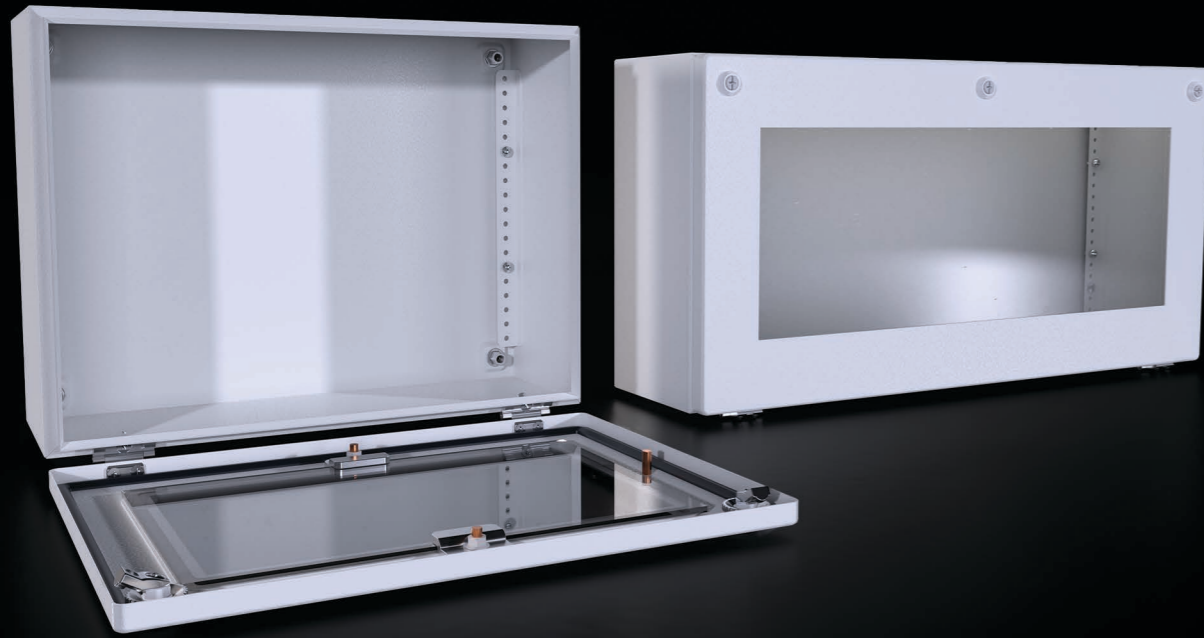
Version 3

Catalogue



Assembly Instructions

KT GLAZED DOOR BUS BOX



**Materials** : Main Body, Door Mild Steel  
**Surface Finishing** : Nano Plating + Electrostatic Powder Coating RAL 7035  
**IP Rate** : IEC EN 60529 IP 66  
**NEMA Rate** : NEMA 4  
**IK Rate** : IK 06

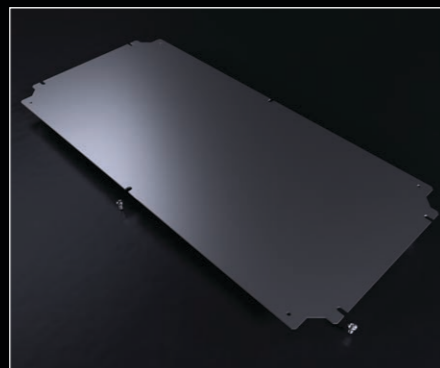
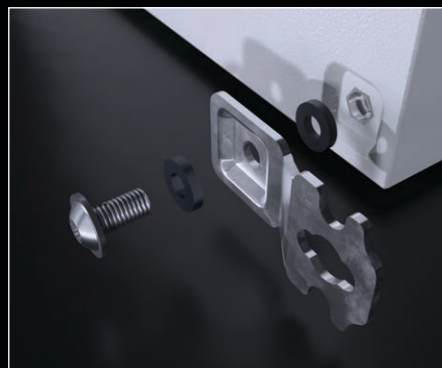
**Standards** : IEC 62208 (Enclosure Standards)  
**Corrosion Rate** : C3-M based on TS EN ISO 12944-2  
**Warranty** : KYT-72  
**Supply Includes** : Body, Glazed Hinged Door, Assembly Parts  
 Please see page 382 for technical drawings.

ACCESSORIES:

Wall Bracket p.: 55

Mounting Plate p.: 60

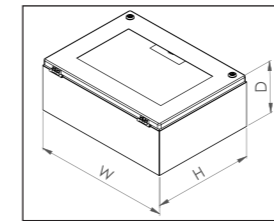
Earthing Cable p.: 71



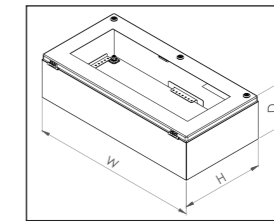
Other Accessories p.: 50

KT GLAZED DOOR BUS BOX

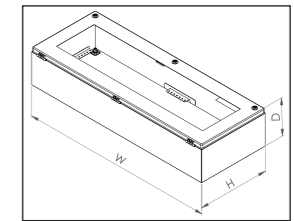
PRODUCT CODE	ENCLOSURE				STEEL THICKNESSES		COVER		
	W*	H*	D*	WEIGHT	BODY	COVER	LOCK	HINGE	VERSION
	mm	mm	mm	kg	mm	mm	pcs.	pcs.	
KT 374.215	400	200	155	4,23	1,2	1,2	2	2	1
KT 374.315	400	300	155	5,29	1,2	1,2	2	2	1
KT 376.315	600	300	155	7,04	1,2	1,2	3	2	2
KT 378.315	800	300	155	8,78	1,2	1,2	3	3	3



Version 1



Version 2



Version 3

Catalogue



Assembly Instructions