

DM LARGE / Highlights

Large interior volume with thin curved body structure.
Wide door application area



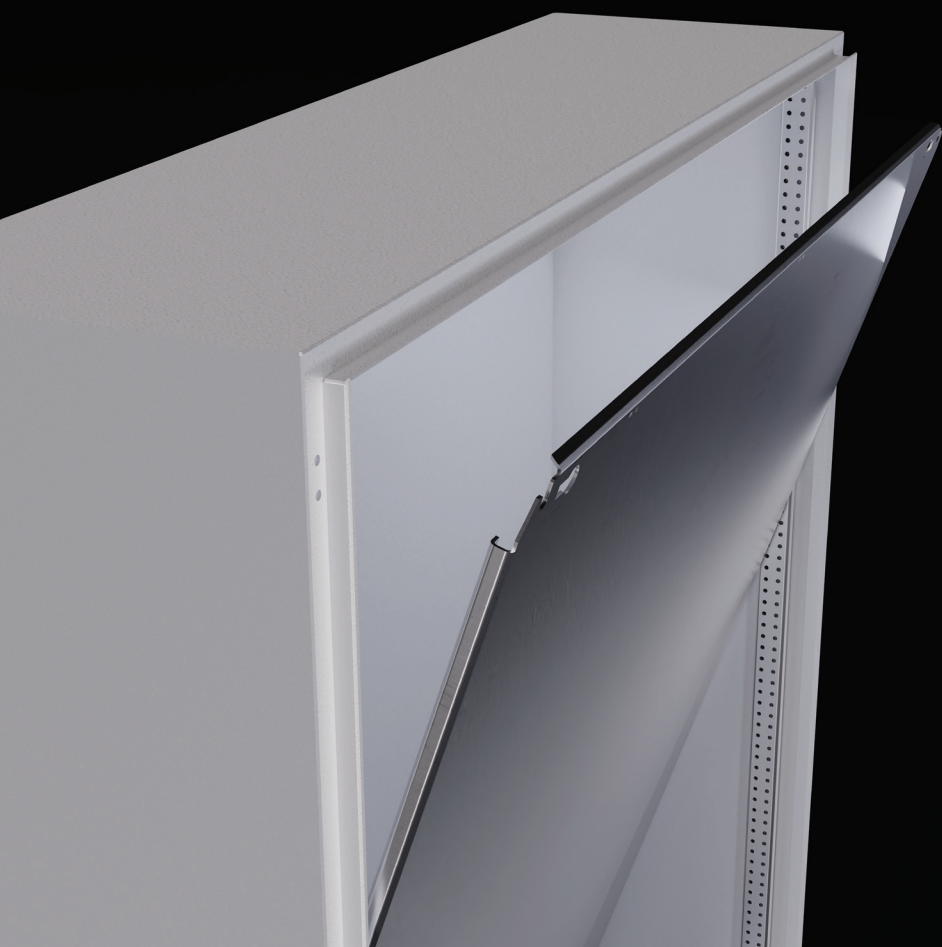
Earthing integration

Externally attachable
wall bracket





Easy mounting plate assembly
and support system

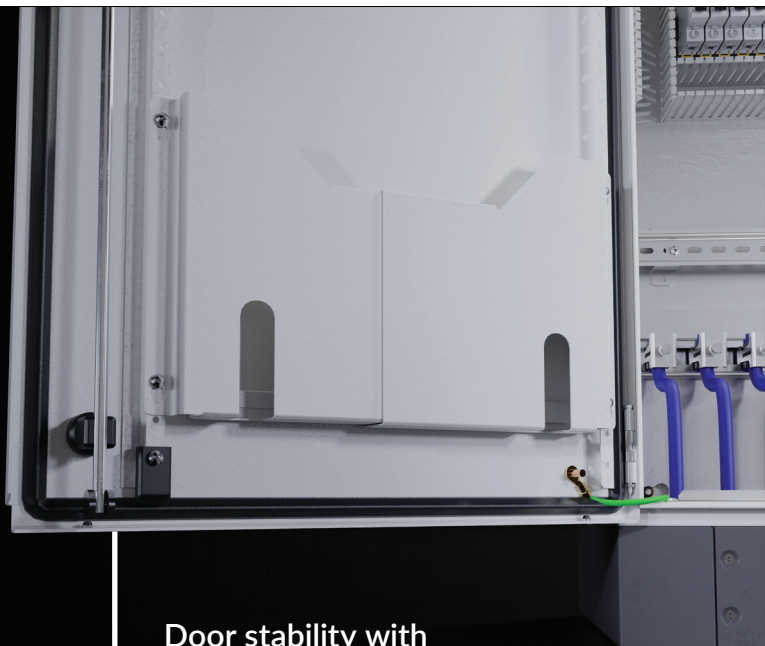


Static durability with curved
mounting plate

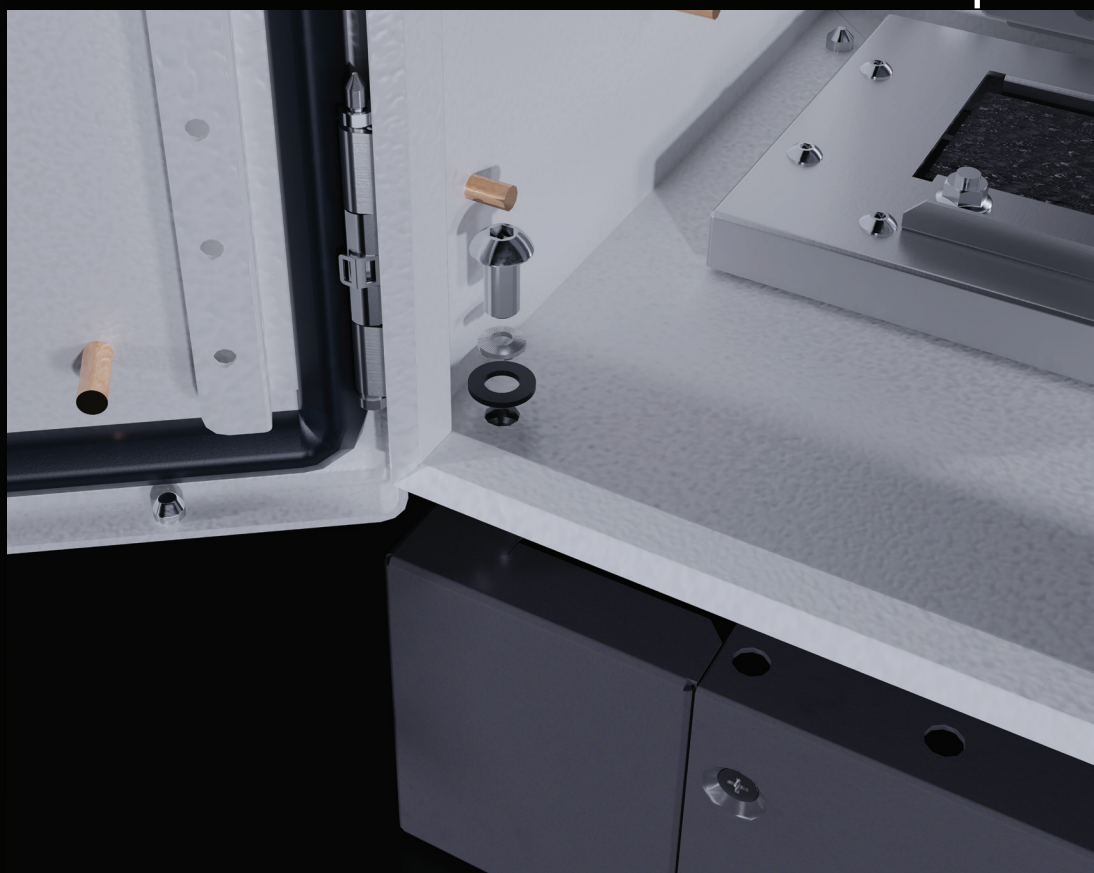
DM LARGE / Highlights



Strong 3-point lock structure



Door stability with door support part



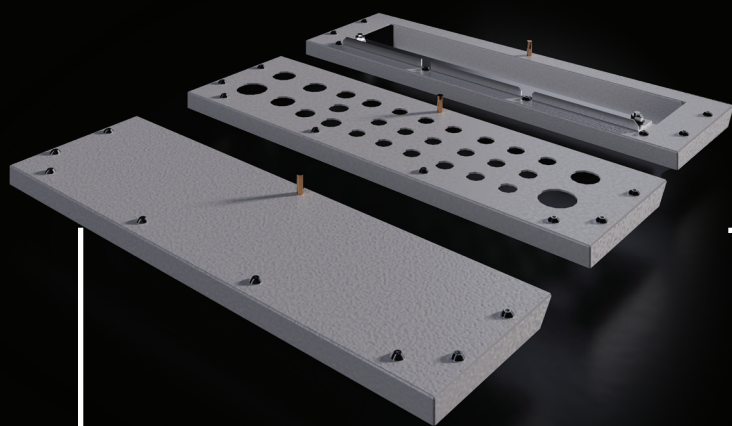
Floor standing compatibility with ready-to-use plinth holes



Modern and stylish look
with Radius corner

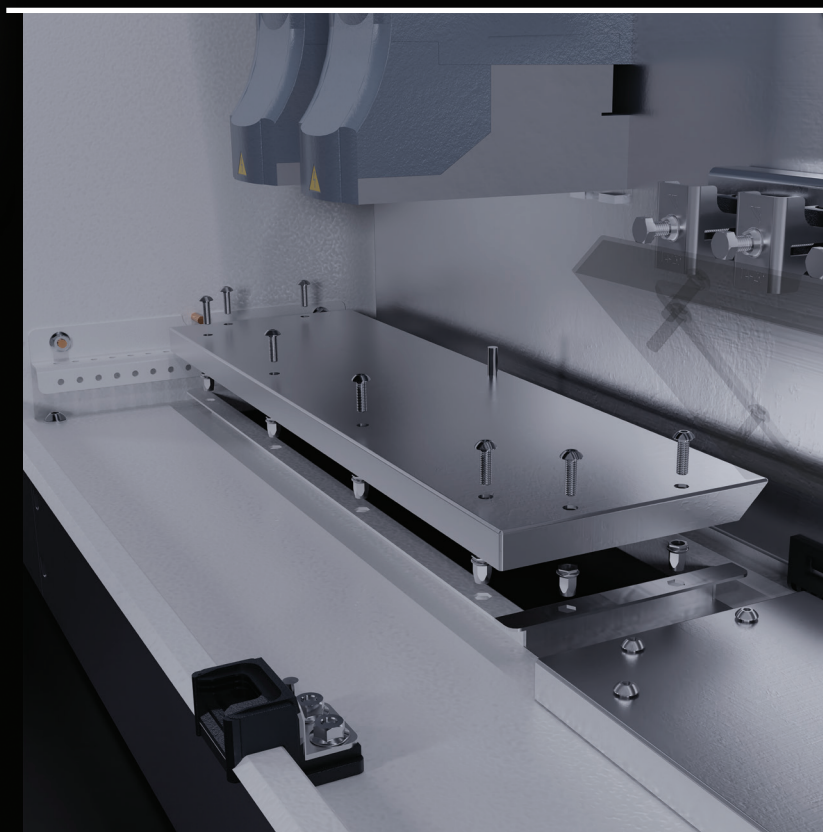


Continuous rain protection
with roof option



Safe and functional usage with cable
management options

Floor standing compatibility with interior
access gland plate





Materials : Body, Front Door, Gland Plate Mild Steel
Mounting Plate Galvanized Steel

Surface Finishing : Iron-phosphate + electrostatic powder coating RAL 7035

IP Rate : IEC EN 60529
Single Door IP 66, Double Door IP54

NEMA Rate : Nema 4

Standards : IEC 62208 (Enclosure Standards)

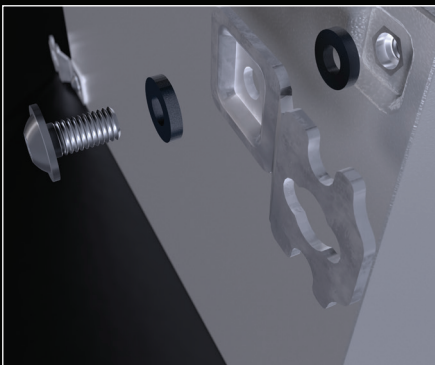
Corrosion Rate : C3-M based on TS EN ISO 12944-2

Warranty : KYT-72

Supply Includes : Body, Hinged Door, Gland Plate, Mounting Plate, Assembly Parts

ACCESSORIES:

Wall Bracket p.: 55



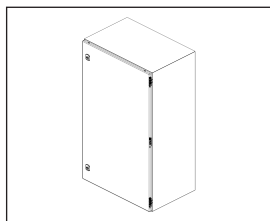
Earthing Cable p.: 71



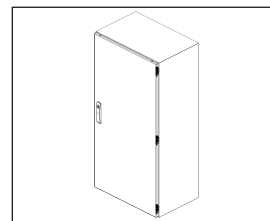
Other Accessories p.: 50

DM-LARGE ENCLOSURE

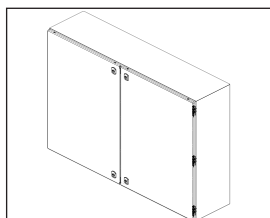
PRODUCT CODE	ENCLOSURE				MOUNTING PLATE		STEEL THICKNESSES			DOOR		
	W*	H*	D*	WEIGHT	W	H	BODY	DOOR	MOUNTING PLATE	LOCK	HINGE	VERSION
	mm	mm	mm	kg	mm	mm	mm	mm	mm	pcs.	pcs.	
DM 286.140	600	1000	400	36,73	550	975	1,5	2	2	2	3	1
DM 286.124	600	1200	400	54,41	550	1175	1,5	2	2	1	3	2
DM 288.140	800	1000	400	76,45	750	975	1,5	2	2	2	3	1
DM 288.124	800	1200	400	68,28	750	1175	1,5	2	2	1	3	2
DM 281.130	1000	1000	300	57,81	950	975	1,5	2	2	4	6	3
DM 281.123	1000	1200	300	68,07	950	1175	1,5	2	2	2	6	4
DM 281.143	1000	1400	300	78,33	950	1375	1,5	2	2	2	6	4
DM 281.144	1000	1400	400	81,80	950	1375	1,5	2	2	2	6	4
DM 281.830	1200	800	300	54,63	1150	775	1,5	2	2	4	4	3
DM 281.840	1200	800	400	56,68	1150	775	1,5	2	2	4	4	3
DM 281.230	1200	1200	300	78,60	1150	1175	1,5	2	2	2	6	4
DM 281.140	1200	1200	400	81,60	1150	1175	1,5	2	2	2	6	4



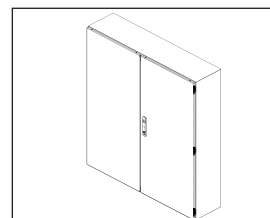
Version 1



Version 2



Version 3



Version 4

Catalogue



Assembly Instructions