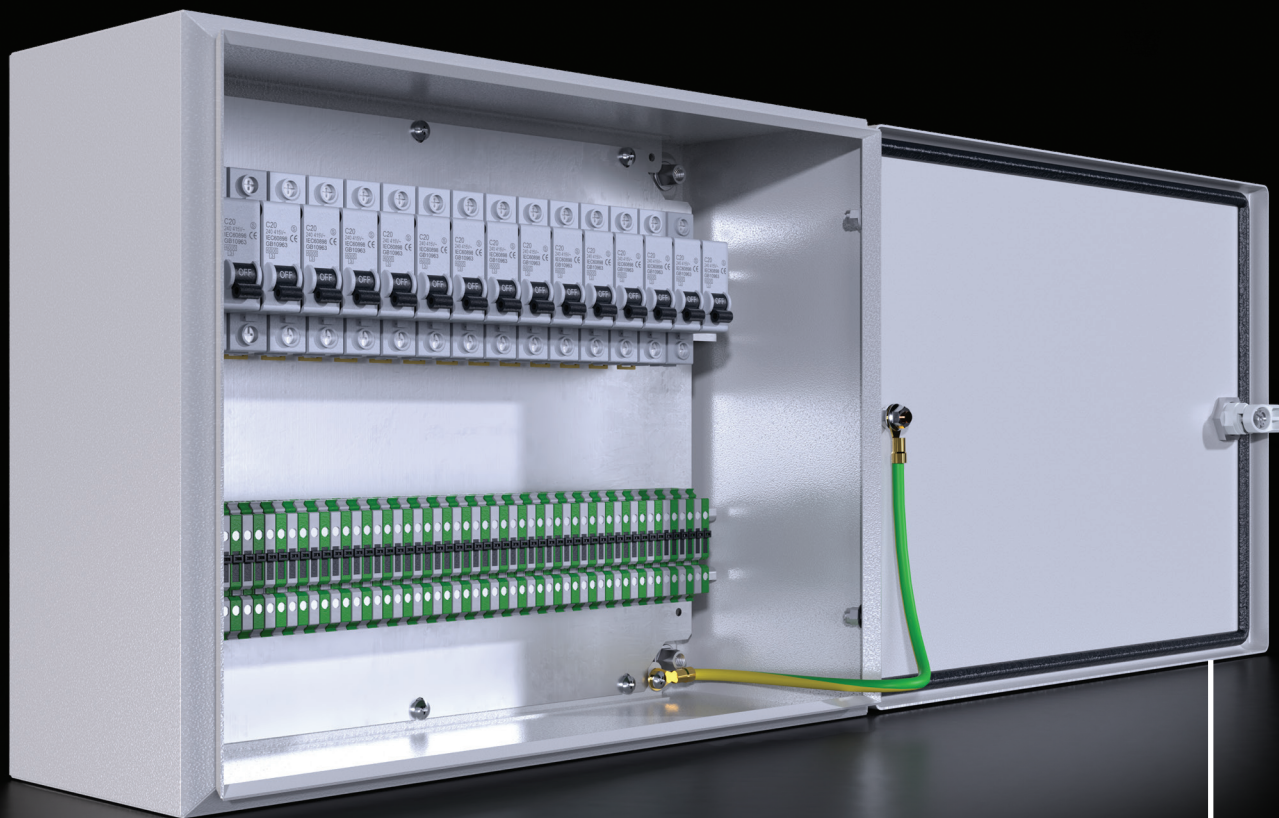
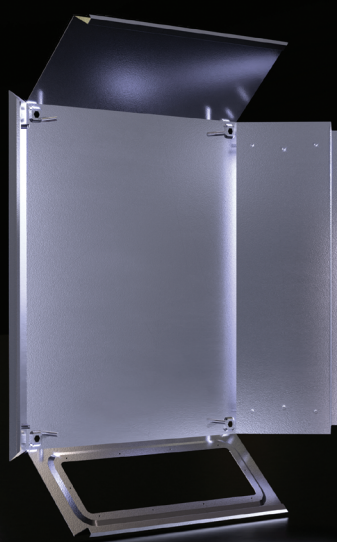
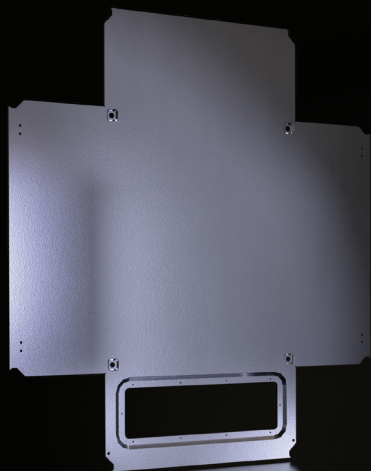


DM SMALL / Highlights



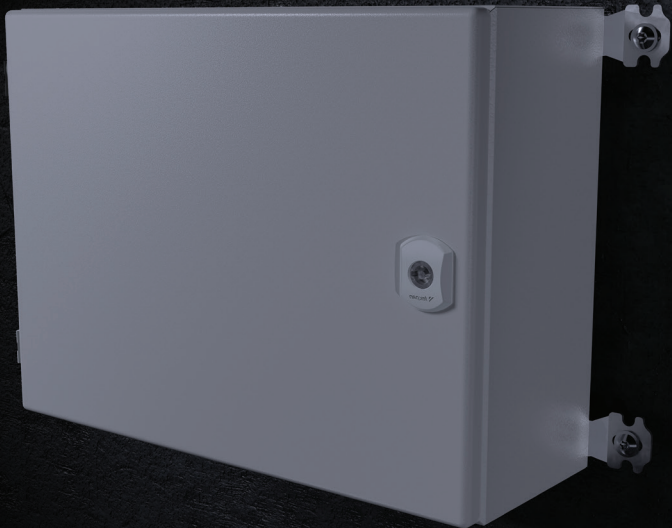
Earthing integration easy access
with 180° opening hinge



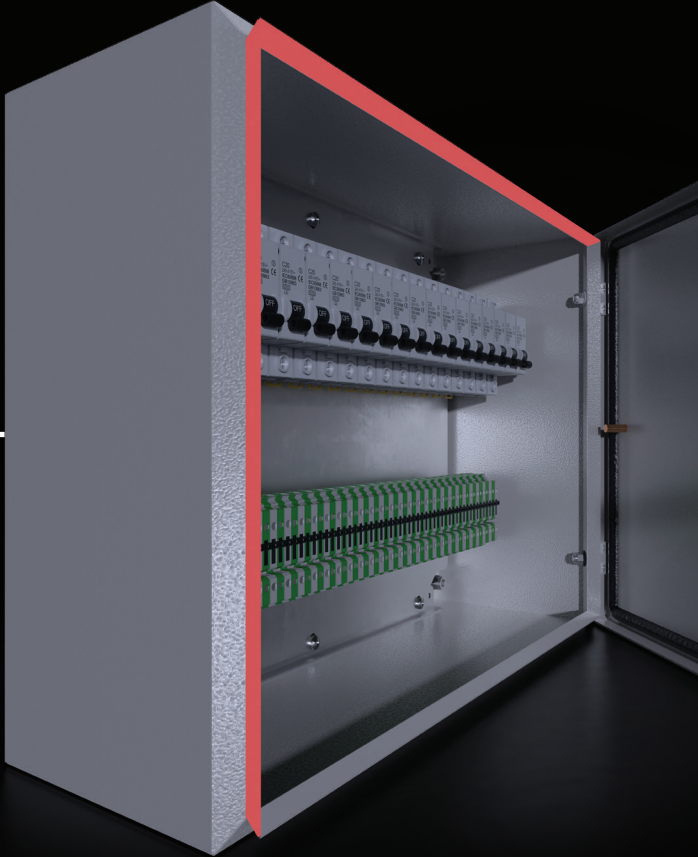
Automatic-welded,
compact & durable enclosure body



Externally attachable wall bracket



Large interior volume with thin curved body structure



Modern and stylish look with Radius corner structure





Materials : Body and Door Mild Steel
Mounting Plate Galvanized Steel

Surface Finishing : Iron-phosphate + electrostatic
powder coating RAL 7035

IP Rate : IEC EN 60529 IP 65

NEMA Rate : Nema 4

Standards : IEC 62208 (Enclosure Standards)

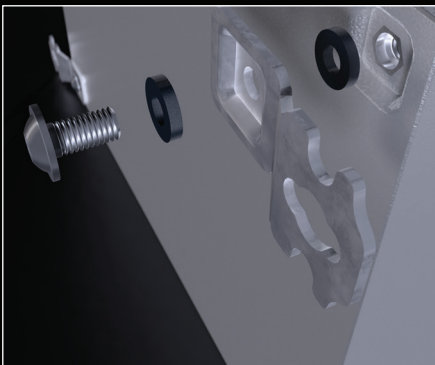
Corrosion Rate : C3-M based on TS EN ISO 12944-2v

Warranty : KYT-72

Supply Includes : Body, Hinged Door, Mounting Plate,
Assembly Parts

ACCESSORIES:

Wall Bracket p.: 55



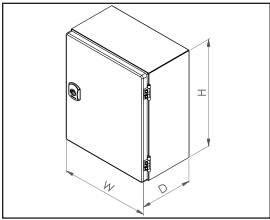
Earthing Cable p.: 71



Other Accessories p.: 50

DM-SMALL ENCLOSURE

PRODUCT CODE	ENCLOSURE				MOUNTING PLATE		STEEL THICKNESSES			DOOR	
	W*	H*	D*	WEIGHT	W	H	BODY	DOOR	MOUNTING PLATE	LOCK	HINGE
	mm	mm	mm	kg	mm	mm	mm	mm	mm	pcs.	pcs.
DM 232.201	200	200	150	3,29	175	185	1,2	1,2	2	1	2
DM 232.251	200	250	150	3,77	175	235	1,2	1,2	2	1	2
DM 232.215	250	250	150	4,33	225	235	1,2	1,2	2	1	2
DM 232.315	250	300	150	4,90	225	285	1,2	1,2	2	1	2
DM 232.351	250	350	150	5,47	225	335	1,2	1,2	2	1	2
DM 233.315	300	300	150	5,55	275	285	1,2	1,2	2	1	2
DM 233.415	300	400	150	6,86	275	385	1,2	1,2	2	1	2
DM 234.315	400	300	150	6,84	375	285	1,2	1,2	2	1	2



Version 1

Catalogue



Assembly Instructions