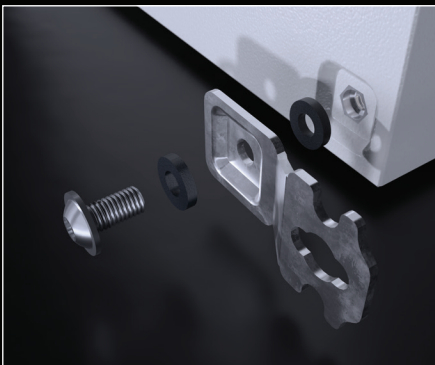


**Materials** : Main Body, Door Mild Steel  
**Surface Finishing** : Iron-phosphate + electrostatic powder coating RAL 7035  
**IP Rate** : IEC EN 60529 IP 66  
**NEMA Rate** : Nema 4

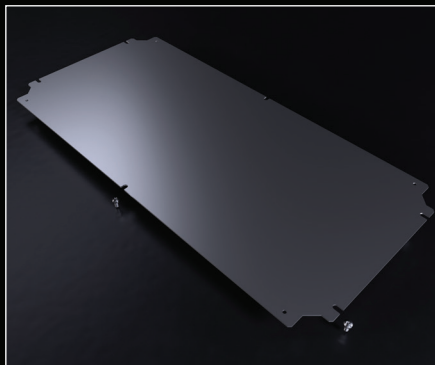
**Standards** : IEC 62208 (Enclosure Standards)  
**Corrosion Rate** : C3-M based on TS EN ISO 12944-2  
**Warranty** : KYT-72  
**Supply Includes** : Body, Glazed Hinged Door, Assembly Parts

### ACCESSORIES:

Wall Bracket p.: 55



Mounting Plate p.: 60



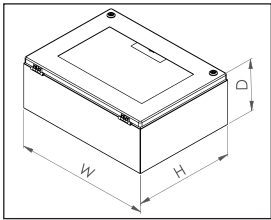
Earthing Cable p.: 71



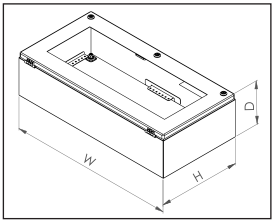
Other Accessories p.: 50

KT GLAZED DOOR BUS BOX

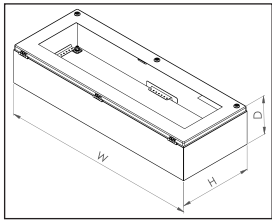
PRODUCT CODE	ENCLOSURE				STEEL THICKNESSES		COVER		
	W*	H*	D*	WEIGHT	BODY	COVER	LOCK	HINGE	VERSION
	mm	mm	mm	kg	mm	mm	pcs.	pcs.	
KT 374.215	400	200	155	4,23	1,2	1,2	2	2	1
KT 374.315	400	300	155	5,29	1,2	1,2	2	2	1
KT 376.315	600	300	155	7,04	1,2	1,2	3	2	2
KT 378.315	800	300	155	8,78	1,2	1,2	3	3	3



Version 1



Version 2



Version 3

Catalogue



Assembly Instructions

