

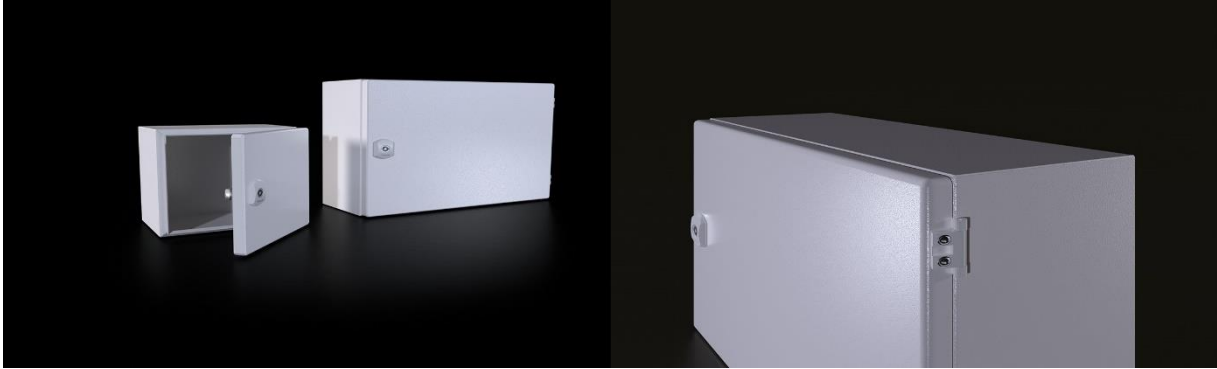
DM Small Enclosure

Product Information

| PRODUCT CODE | W* (mm) | H* (mm) | D* (mm) | WEIGHT (kg) | M/P W* (mm) | M/P H* (mm) | BODY THICKNESS (mm) | DOOR THICKNESSES (mm) | M/P THICKNESSES (mm) | LOCK (pcs) | HINGE (pcs) |
|--------------|---------|---------|---------|-------------|-------------|-------------|---------------------|-----------------------|----------------------|------------|-------------|
| DM 232.201 | 200 | 200 | 150 | 3,29 | 175 | 185 | 1,2 | 1,2 | 2 | 1 | 2 |

Product Features

| | |
|--------------------------|--|
| MATERIALS | Body and Door Mild Steel. Mounting Plate Galvanized Steel |
| SURFACE FINISHING | Iron-phosphate, Electrostatic powder coating RAL 7035 |
| IP RATE | IEC EN 60529 IP65 |
| NEMA RATE | NEMA 4 |
| STANDARTS | IEC 62208 (Enclosure Standards) |
| CORROSION RATE | C3-M based on TS EN ISO 12944-2v |
| WARRANTY | KYT-72 |
| SUPPLY INCLUDES | Body, Hinged Door, Mounting Plate, Assembly Parts |



www.tekpan.com.tr/

TEKPAN TEKNİK ELEKTRİK KUMANDA PANO SANAYİ VE TURİZM TİCARET ANONİM ŞİRKETİ
Halilbeyli Osb Mah, Tekpan Fabrika, Parsa Cad No:2/1 Kemalpaşa, İzmir / TÜRKİYE

Tel: +90 232 877 18 77

Fax: +90 232 877 13 48