

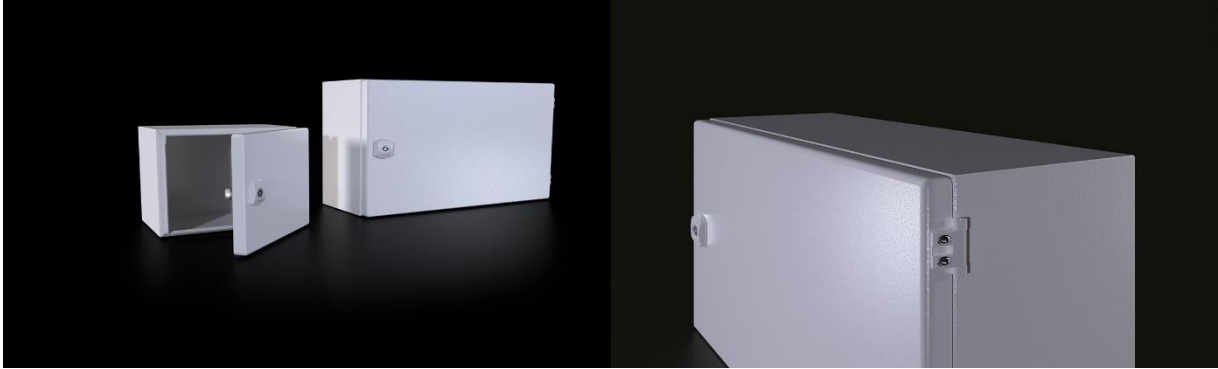
DM Small Enclosure

Product Information

PRODUCT CODE	W* (mm)	H* (mm)	D* (mm)	WEIGHT (kg)	M/P W* (mm)	M/P H* (mm)	BODY THICKNESS (mm)	DOOR THICKNESSES (mm)	M/P THICKNESSES (mm)	LOCK (pcs)	HINGE (pcs)
DM 232.315	250	300	150	4,90	225	285	1,2	1,2	2	1	2

Product Features

MATERIALS	Body and Door Mild Steel. Mounting Plate Galvanized Steel
SURFACE FINISHING	Iron-phosphate, Electrostatic powder coating RAL 7035
IP RATE	IEC EN 60529 IP65
NEMA RATE	NEMA 4
STANDARTS	IEC 62208 (Enclosure Standards)
CORROSION RATE	C3-M based on TS EN ISO 12944-2v
WARRANTY	KYT-72
SUPPLY INCLUDES	Body, Hinged Door, Mounting Plate, Assembly Parts



www.tekpan.com.tr/

TEKPAN TEKNİK ELEKTRİK KUMANDA PANO SANAYİ VE TURİZM TİCARET ANONİM ŞİRKETİ
Halilbeyli Osb Mah, Tekpan Fabrika, Parsa Cad No:2/1 Kemalpaşa, İzmir / TÜRKİYE

Tel: +90 232 877 18 77

Fax: +90 232 877 13 48