

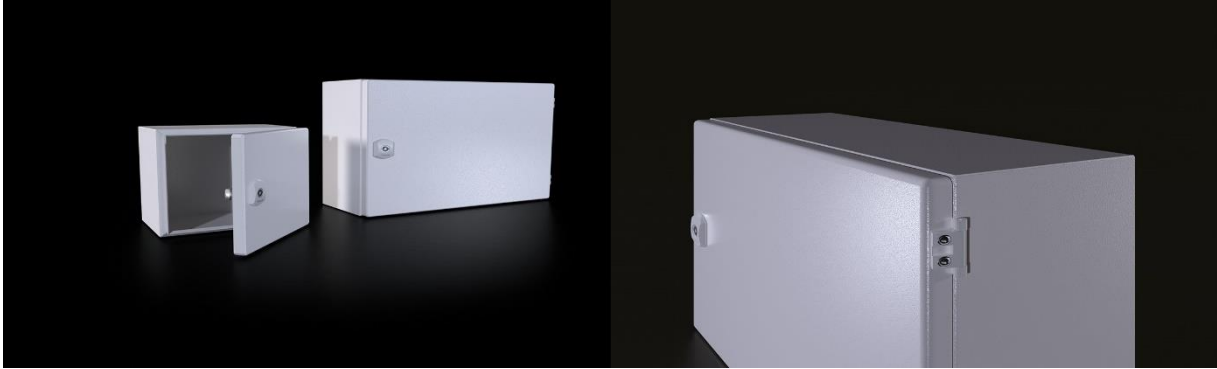
# DM Small Enclosure

## Product Information

| PRODUCT CODE | W* (mm) | H* (mm) | D* (mm) | WEIGHT (kg) | M/P W* (mm) | M/P H* (mm) | BODY THICKNESS (mm) | DOOR THICKNESSES (mm) | M/P THICKNESSES (mm) | LOCK (pcs) | HINGE (pcs) |
|--------------|---------|---------|---------|-------------|-------------|-------------|---------------------|-----------------------|----------------------|------------|-------------|
| DM 233.315   | 300     | 300     | 150     | 5,55        | 275         | 285         | 1,2                 | 1,2                   | 2                    | 1          | 2           |

## Product Features

|                          |  |
|--------------------------|--|
| <b>MATERIALS</b>         | <b>Body and Door Mild Steel. Mounting Plate Galvanized Steel</b> |
| <b>SURFACE FINISHING</b> | <b>Iron-phosphate, Electrostatic powder coating RAL 7035</b>     |
| <b>IP RATE</b>           | <b>IEC EN 60529 IP65</b>   |
| <b>NEMA RATE</b>         | <b>NEMA 4</b>  |
| <b>STANDARTS</b>         | <b>IEC 62208 (Enclosure Standards)</b>                           |
| <b>CORROSION RATE</b>    | <b>C3-M based on TS EN ISO 12944-2v</b>                          |
| <b>WARRANTY</b>          | <b>KYT-72</b>  |
| <b>SUPPLY INCLUDES</b>   | <b>Body, Hinged Door, Mounting Plate, Assembly Parts</b>         |



[www.tekpan.com.tr/](http://www.tekpan.com.tr/)

TEKPAN TEKNİK ELEKTRİK KUMANDA PANO SANAYİ VE TURİZM TİCARET ANONİM ŞİRKETİ  
Halilbeyli Osb Mah, Tekpan Fabrika, Parsa Cad No:2/1 Kemalpaşa, İzmir / TÜRKİYE

Tel: +90 232 877 18 77

Fax: +90 232 877 13 48