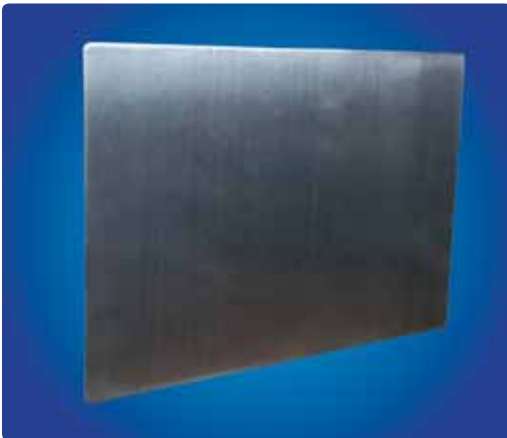






STAINLESS STEEL MATERIAL QUALITY AND SURFACE PROCESS



NATURAL SURFACE APPLICATION

- ▼ Standard application
- ▼ Standard AISI 304 (1.4031) stainless steel.
- ▼ Suitable surface process: 140 grain
- ▼ AISI 316 (1.4401) stainless steel can also be used.
- ▼ Coating can be applied on material.



KT TERMINAL BOXES

Page 126



DM WALL-MOUNTED ENCLOSURES

Page 127



DT FLOOR STANDING ENCLOSURES

Page 128-130



KMT CONTROL DESKS

Page 131

STAINLESS STEEL ENCLOSURES

KT STAINLESS STEEL TERMINAL BOXES



Material : All steel sheets: 1,50 mm quality 304 stainless steel

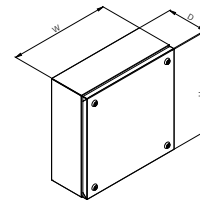
Surface process : Natural stainless-steel surface application

IP Protection : IP 66

Supply includes : 1 pcs body, 1 pcs screwed lid, 4 pcs wall brackets and assembly parts

▼ Please contact the customer service for quality 316 steel sheet application or varnish-coated process.

▼ Please see page 188 for technical drawings.



ENCLOSURE SIZES (mm)			
WIDTH(W)	HEIGHT(H)	DEPTH(D)	REFERENCE NO
200	200	120	312.212.K
300	200	120	313.212.K
300	300	120	313.312.K
400	200	120	314.212.K
400	300	120	314.312.K
400	400	120	314.412.K

MOUNTING PLATE APPLICATION



▼ Please see page 19 for the option table.

WALL BRACKET



▼ 304 stainless steel and included in the standard supply.

STAINLESS STEEL ENCLOSURES

DM STAINLESS STEEL WALL-MOUNTED ENCLOSURES



Material : Body: 1,50 mm, 304 stainless steel sheet
 Door: 1,50 mm-2,00 mm stainless steel sheet
 Mounting plate: 2,00 mm stainless steel

Surface process : Natural stainless steel surface application

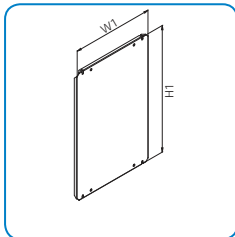
IP Protection : Single door: IP 65
 Double door: IP55

Supply includes : 1 pcs body, 1 pcs door, 1 pcs mounting plate,
 1 pcs gland plate

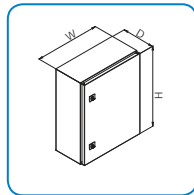
▼ Has the same characteristics as DM service.
 Please see page 16-17 for all qualities.

▼ Please contact the customer service for 316 steel sheet
 application or varnish-coated surface process.

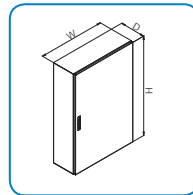
▼ Please contact the customer service for special size requests.



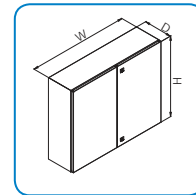
Mounting plate



Version 1



Version 2



Version 3

DM ENCLOSURE SIZES (mm)						Mounting Plate (mm)	
WIDTH(W)	HEIGHT(H)	DEPTH(D)	REFERANS NO	VERSION	LOCK QTY	W1	H1
300	400	150	213.415.K	1	1	250	340
300	400	200	213.420.K	1	1	250	340
400	500	200	214.520.K	1	2	350	440
400	600	200	214.620.K	1	2	350	540
400	600	280	214.630.K	1	2	350	540
500	700	200	215.720.K	1	2	450	640
500	700	280	215.730.K	1	2	450	640
600	800	200	216.820.K	1	2	550	740
600	800	280	216.830.K	1	2	550	740
600	1000	280	216.030.K	1	2	550	940
600	1150	280	216.230.K	2	---	550	1090
800	1000	280	218.030.K	1	2	750	940
800	1150	280	218.230.K	2	---	750	1090
1000	1000	280	210.030.K	3	---	950	940

STAINLESS STEEL ENCLOSURES

DT FLOOR STANDING STAINLESS STEEL CABINET



Material : Body : 1,50 mm 304 stainless steel sheet.
Door: 2,00 mm 304 steel sheet.
Rear panel: 1,50 mm 304 steel sheet.
Top cover: 1,50 mm 304 steel sheet.
Plinth corners: 2,00 mm 304 steel sheet.
Plinth panels: 1,50 mm 304 steel sheet.

Attention : Mounting plate and other interior equipments chosen separately Page 129-130

Surface process : Natural stainless surface process

IP Protection : IP 55

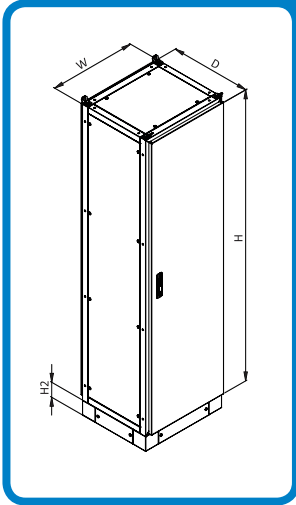
Supply includes : 1 set of panel body, 1 pcs door, 1 pcs rear panel,
1 pcs top cover, 1 set of gland plate, 1 set of
H100mm plinth, 1 set of enclosure combination kit,
4 pcs lifting hook.

▼ Please contact the customer service for 316 steel sheet application or varnish-coated surface process.

STAINLESS STEEL ENCLOSURES

DT FLOOR STANDING STAINLESS STEEL CABINET

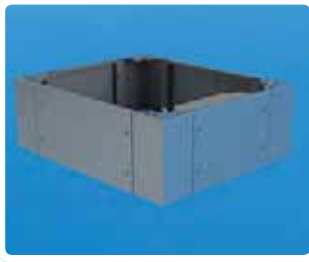
ASSEMBLED DT STAINLESS STEEL ENCLOSURE



DT ENCLOSURE SIZES (mm)			REFERENCE NO.	DOOR	MOUNTING PLATE REF. NO
WIDTH(W)	HEIGHT(H)	DEPTH(D)			
600	1800	400	136.184.K	SINGLE	942.618
600	1800	500	136.185.K	SINGLE	942.618
600	1800	600	136.186.K	SINGLE	942.618
600	1800	800	136.188.K	SINGLE	942.618
600	2000	400	136.204.K	SINGLE	942.620
600	2000	500	136.205.K	SINGLE	942.620
600	2000	600	136.206.K	SINGLE	942.620
600	2000	800	136.208.K	SINGLE	942.620
800	1800	400	138.184.K	SINGLE	942.818
800	1800	500	138.185.K	SINGLE	942.818
800	1800	600	138.186.K	SINGLE	942.818
800	1800	800	138.188.K	SINGLE	942.818
800	2000	400	138.204.K	SINGLE	942.820
800	2000	500	138.205.K	SINGLE	942.820
800	2000	600	138.206.K	SINGLE	942.820
800	2000	800	138.208.K	SINGLE	942.820
1000	1800	400	130.184.K	DOUBLE	942.018
1000	1800	500	130.185.K	DOUBLE	942.018
1000	1800	600	130.186.K	DOUBLE	942.018
1000	1800	800	130.188.K	DOUBLE	942.018
1000	2000	400	130.204.K	DOUBLE	942.020
1000	2000	500	130.205.K	DOUBLE	942.020
1000	2000	600	130.206.K	DOUBLE	942.020
1000	2000	800	130.208.K	DOUBLE	942.020
1200	1800	400	132.184.K	DOUBLE	942.218
1200	1800	500	132.185.K	DOUBLE	942.218
1200	1800	600	132.186.K	DOUBLE	942.218
1200	1800	800	132.188.K	DOUBLE	942.218
1200	2000	400	132.204.K	DOUBLE	942.220
1200	2000	500	132.205.K	DOUBLE	942.220
1200	2000	600	132.206.K	DOUBLE	942.220
1200	2000	800	132.208.K	DOUBLE	942.220

STAINLESS STEEL ENCLOSURES

DT FLOOR STANDING STAINLESS STEEL CABINET



DT STAINLESS STEEL PLINTH

Material : Plinth corners: 2,00 mm 304 stainless steel
Plinth panels: 1,50 mm 304 stainless steel

Supply includes : 4 pcs support corner, 2 pcs front plinth panel, 2 pcs side plinth panel

DT ENCLOSURE WIDTH (W)	DT ENCLOSURE DEPTH (D)	H100 Ref. No.	H200 Ref. No.
600	400	911.164.K	911.264.K
600	500	911.165.K	911.265.K
600	600	911.166.K	911.266.K
600	800	911.168.K	911.268.K
800	400	911.184.K	911.284.K
800	500	911.185.K	911.285.K
800	600	911.186.K	911.286.K
800	800	911.188.K	911.288.K
1000	400	911.104.K	911.204.K
1000	500	911.105.K	911.205.K
1000	600	911.106.K	911.206.K
1000	800	911.108.K	911.208.K
1200	400	911.124.K	911.224.K
1200	500	911.125.K	911.225.K
1200	600	911.126.K	911.226.K
1200	800	911.128.K	911.228.K



DT STAINLESS STEEL SIDE PANEL

Material : 1,50 mm 304 stainless steel

Supply includes : 2 pcs side panel (1 pair)

DT ENCLOSURE HEIGHT(H)	DT ENCLOSURE DEPTH(D)	REFERANCE NO
1800	400	932.418.K
1800	500	932.518.K
1800	600	932.618.K
1800	800	932.818.K
2000	400	932.420.K
2000	500	932.520.K
2000	600	932.620.K
2000	800	932.820.K

STAINLESS STEEL ENCLOSURES

KMT-1000 AND KMT-2000 STAINLESS CONTROL DESKS



Material : Body, panels: 1,50 mm 304 stainless steel
Plinth corner: 2,00 mm 304 stainless steel
Bottom panel: 1,50 mm 304 stainless steel
Mounting panel: 2,00 mm galvanized steel

▶ Please contact the customer service for 316 steel sheet application or varnish-coated surface process.

▶ Please see page 198-199 for technical drawings.

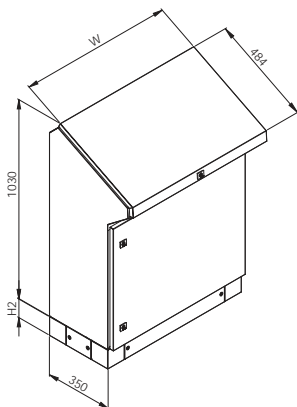
Surface process : Natural stainless surface application

IP Protection : IP 55

Supply includes :

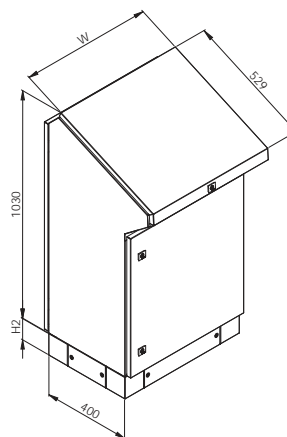
For KMT-1000: 1 pcs back-closed main body, 1 pcs top panel with damper, 1 pcs bottom door, gland plate with foam, 1 pcs mounting plate, 1 set of 100mm plinth

For KMT-2000: 1 pcs open-back main body, 1 pcs top panel with damper, 1 pcs bottom door, 1 pcs rear door, gland plate with foam, 2 pcs mounting plate.



KMT-1000 (Closed rear)

ENCLOSURE WIDTH(W)	DOOR TYPE	REFERENCE NO
600	1	516.350.K
800	1	518.350.K
1000	2	510.350.K
1200	2	512.350.K



KMT-2000 (Opened rear)

ENCLOSURE WIDTH(W)	DOOR TYPE	REFERENCE NO
600	1 + 1	526.400.K
800	1 + 1	528.400.K
1000	2 + 2	520.400.K
1200	2 + 2	522.400.K